

# UDLA

## WALLIABUP ABORIGINAL CULTURAL & VISITOR CENTRE DESIGN DEVELOPMENT / DEVELOPMENT APPLICATION\_REV A



## DOCUMENT REGISTER

Prepared for:  
 City of Cockburn  
 9 Coleville Crescent,  
 Spearwood WA 6163



# UDLA

Walliabup Aboriginal Cultural & Visitor Centre	
Title	Design Development / Development Application
Production Date	8/12/21
Prepared By	UDLA
Author	CH
Status	FINAL
UDLA Project Code	BIBAC

Document Register			
	Date	Amendments	Prepared By
A	08/12/21	FINAL	UDLA - CH

# CONTENTS

<b>1.0 INTRODUCTION</b>	<b>4</b>
1.1 INTRODUCTION	5
1.2 SITE CONTEXT	6
<b>2.0 DESIGN PRINCIPLES &amp; LANDSCAPE PLAN</b>	<b>7</b>
2.1 DESIGN PRINCIPLES	8-10
2.2 SITE PLAN	11
2.3 ACCESS & CONNECTIONS	12
2.4 FIRE MANAGEMENT	13
2.5 CAR PARKING	14
2.6 WELCOME PLACE	15
2.7 FIREPIT SPACE	16
2.8 HABITAT GARDEN	17
2.9 BUSH TUCKER GARDEN	18
<b>3.0 MATERIAL PALETTE</b>	<b>19</b>
3.1 MATERIAL PALETTE	20
3.2 SURFACES PLAN	21
3.3 SURFACES PLAN	22
3.4 CUSTOM FURNITURE SEATING	23
3.5 WALLING & EDGING	24
3.6 FIXTURES	25
3.7 FIXTURES	26
<b>4.0 PLANTING</b>	<b>27</b>
4.1 PLANTING PRINCIPLES	28
4.2 TREE REMOVAL , RETENTION AND PLANTING	29
4.3 MATURE PLANT TRANSPLANTS	30
4.4 BUSH TUCKER + MEDICINAL & CULTURAL PLANTS	31
4.5 PLANT SCHEDULE	32

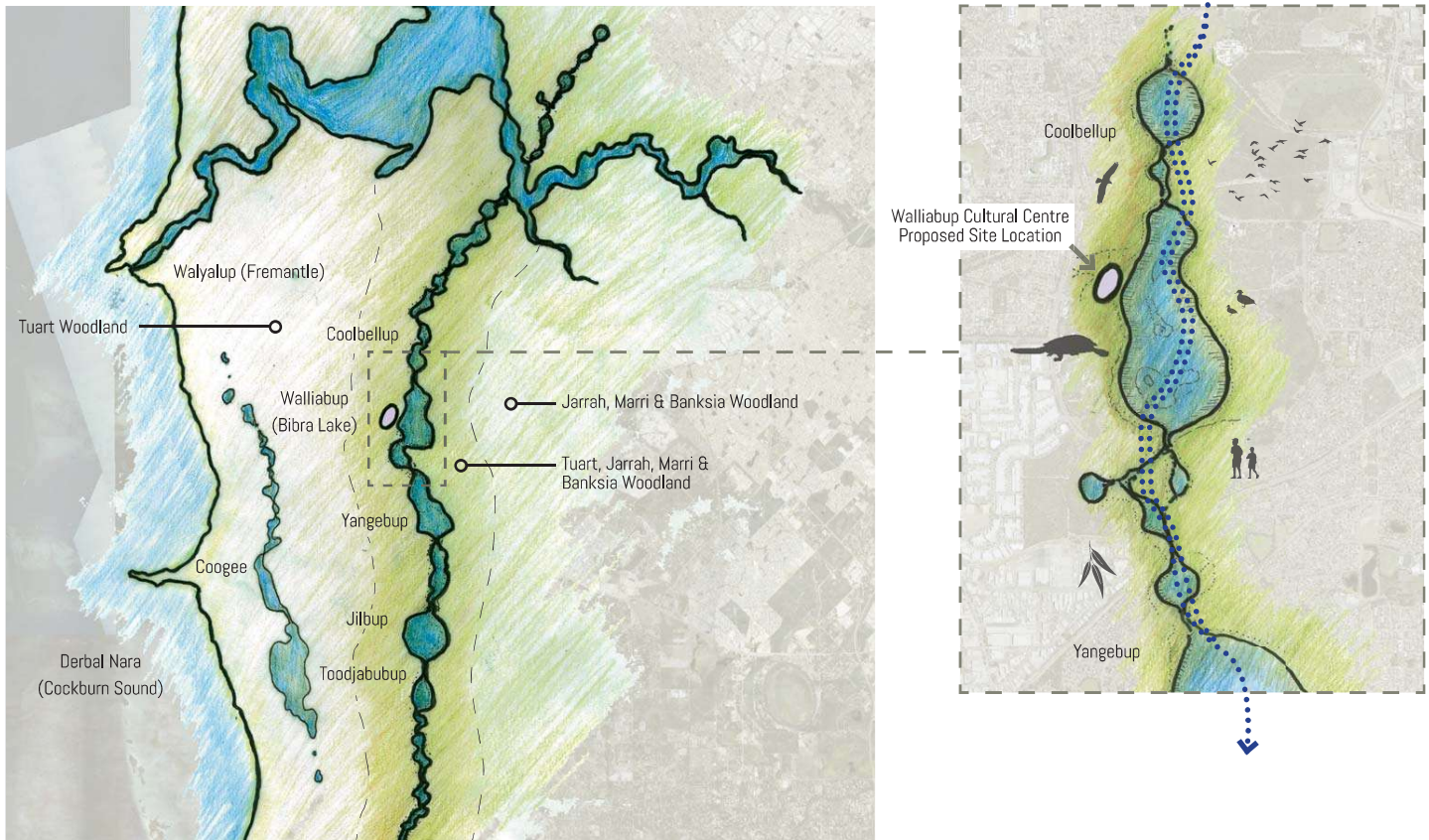
# 1.0 INTRODUCTION



## 1.1 INTRODUCTION

This report has been prepared by UDLA for the Detailed Design phase of the Walliabup Cultural Centre Building and Landscape project. Working closely with both the Aboriginal Reference Group (ARG) and Officer Woods Architects, the detailed designs prepared by UDLA have built on and enhanced the early schematic design work, whilst also retaining the key design principles established at the project conception. Additional consultation has occurred between UDLA and the City of Cockburn to consider the suitability of materials and planting selected for the project and the ongoing maintenance requirements into the future.

## 1.2 SITE CONTEXT



Note: Drawing above and opposite adapted from various sources, by, UDLA.

Nyungar names included have been sourced from the City of Cockburn's 'Beeljar Boodjar, 2011' - (accessed April 2021), among other sources.

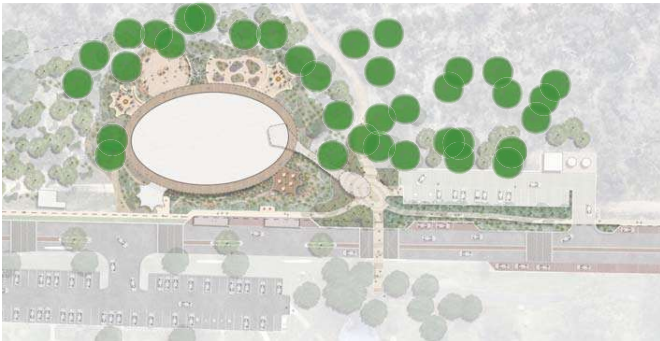
## 2.0 DESIGN PRINCIPLES & LANDSCAPE PLAN

## 2.1 DESIGN PRINCIPLES

The design principles have been developed after consultation with the ARG, Officer Woods, the sub-consultant team, and the City of Cockburn and provide clear design guidance as the project moves into the next stage of design.

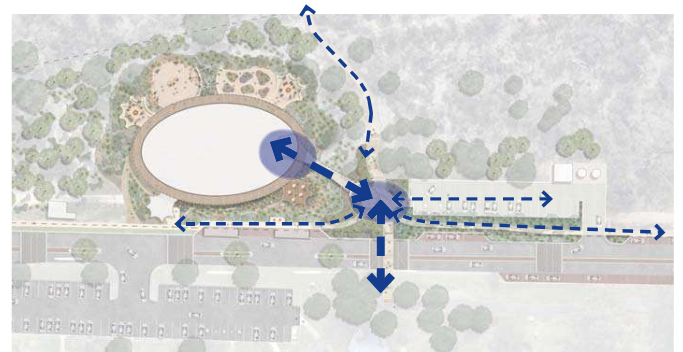
### 1. CARING FOR COUNTRY

Locating landscape spaces and car parks to minimise clearing and tree removal



### 2. SAFE CONNECTIONS

Connected, safe, and legible journeys





## 2.1 DESIGN PRINCIPLES

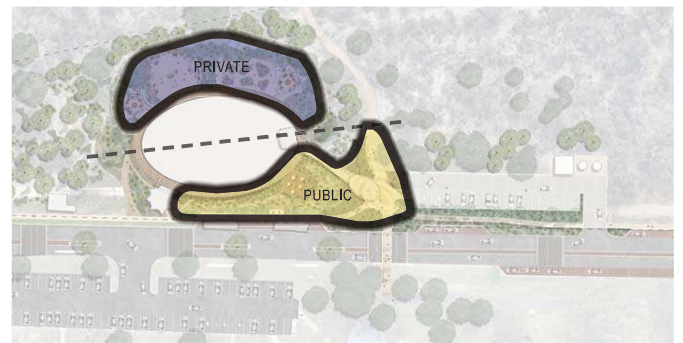
### 3. WELCOME PLACE

Creating a safe, welcoming entry space



### 4. PRIVATE & PUBLIC SPACES

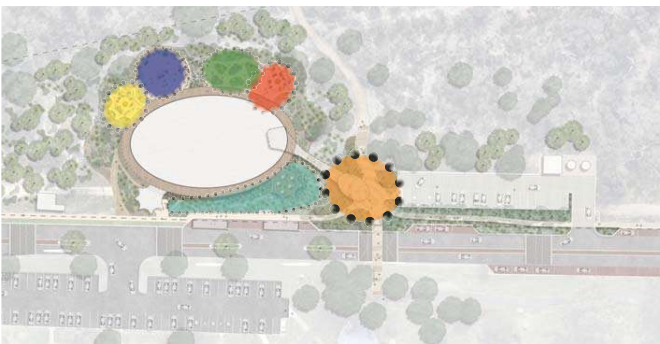
Distinction between the 'private' and public ' spaces



## 2.1 DESIGN PRINCIPLES

### 5. FUNCTIONAL SPACES

Functional spaces connected to the building to support the centres various activities.



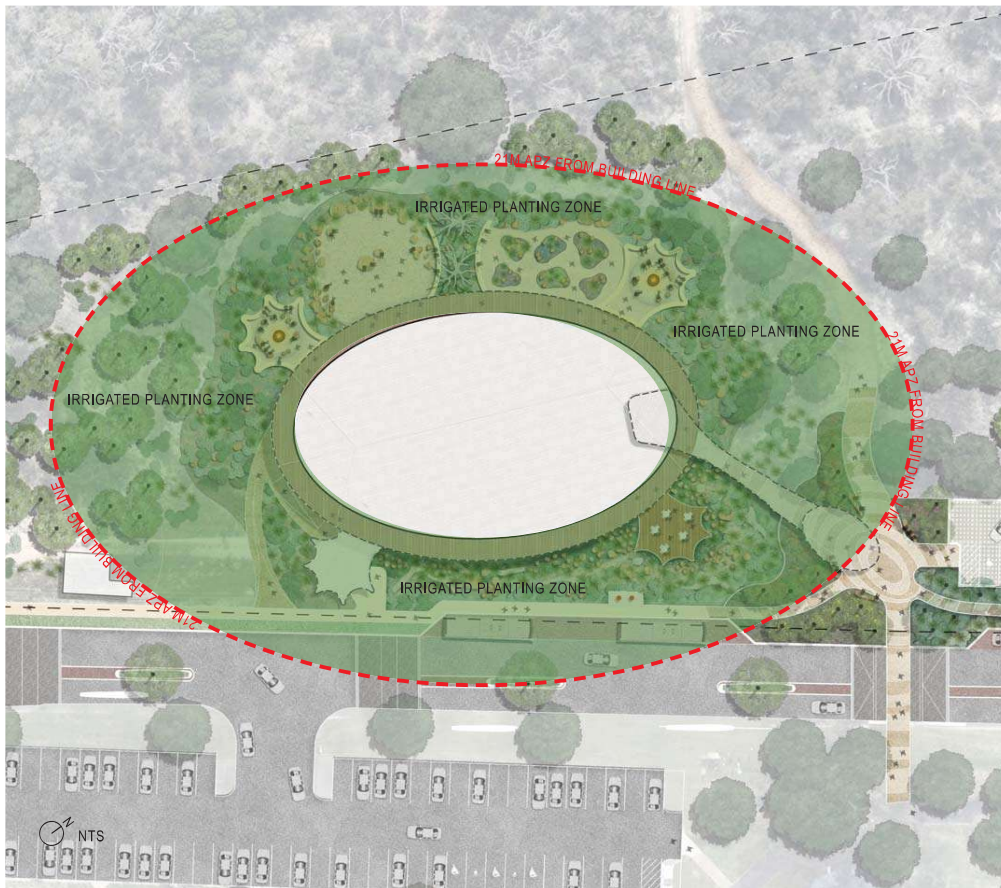
## 2.2 SITE PLAN



## 2.3 ACCESS & CONNECTIONS



## 2.4 FIRE MANAGEMENT



The landscape design response to the Bushfire Management Plan includes the following:

- Irrigated, fire resistant planting within the 21m Asset Protection Zone (APZ);
- Trees under pruned to 2m, or if not able to prune trees then trees to be pruned and under planted or mulched to minimise fire risk;
- Fire resistant materials selected within the 21m APZ;
- Thick, coarse, large particle size mulch used with APZ;

Several identified large dead trees will be removed and relocated for use within the Habitat Garden.

We note that ongoing management of the APZ and surrounds will be required including slashing, under pruning, canopy management, weed management, and regular removal of weeds and built up dead material.

## 2.5 CAR PARKING

A total of 3 ACROD car bays and 54 car bays has been provided for the proposed building which meets the car parking provision required.



## 2.6 WELCOME PLACE



Precedent Image: The use of local local flowering plants will add visual interest to the space. A selection of tree species will be used to provide shade and shelter with seating located adjacent pathways.



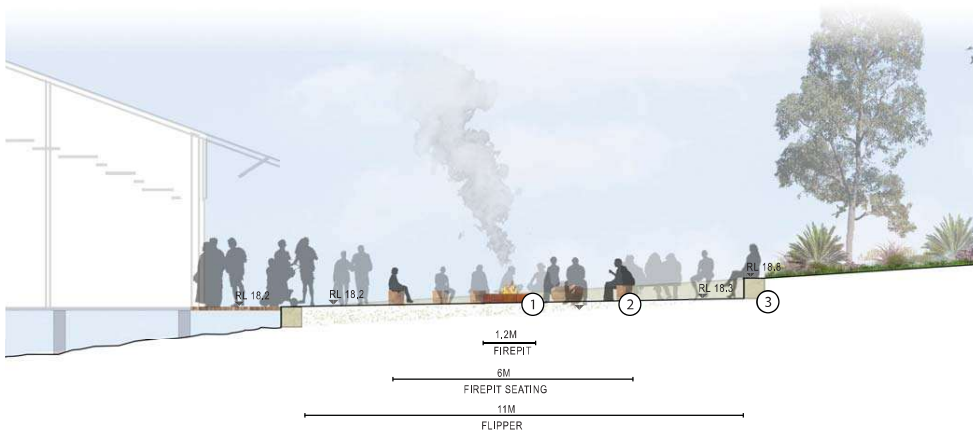
Precedent Image: The use of transplanted Balga and Djiridji as feature planting in surrounding garden beds.



Precedent Image: The use of recycled local timber logs to be carved into seats surrounding the Welcome Place.

## 2.7 FIREPIT SPACE

Indicative Site Section



Site Plan - section location  
NTS



Precedent Image: Central firepit constructed from corten steel with compacted summerstone fines used as the surface finish.



Precedent Image: The use of recycled local timber logs to be carved into seats surrounding the firepit.

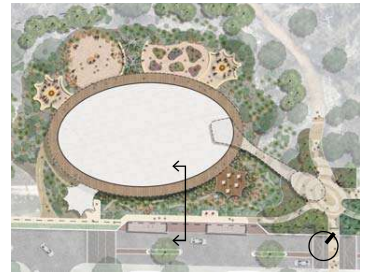
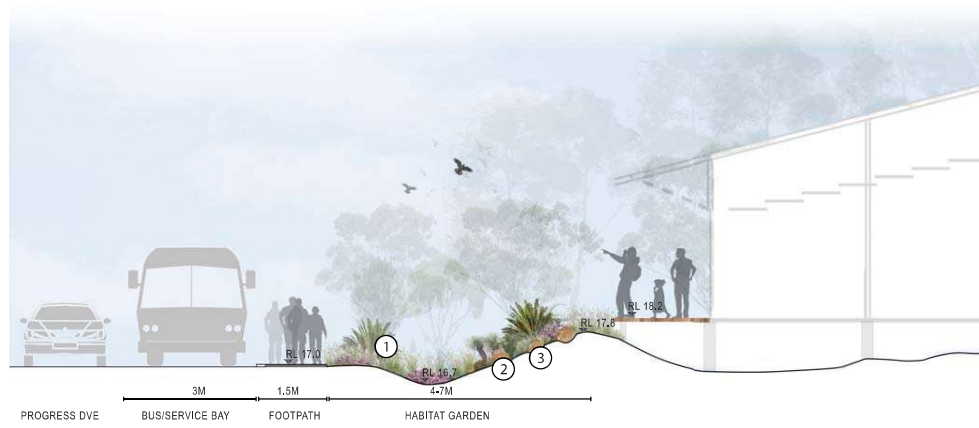


Precedent Image: Rammed earth using site soil to create the flipper form surrounding the firepit area. Low walling to act as a seating wall and retaining to existing levels.



## 2.8 HABITAT GARDEN

Indicative Site Section



Site Plan - section location  
NTS



Precedent Image: Rich planting to support a diverse habitat for flora and fauna.



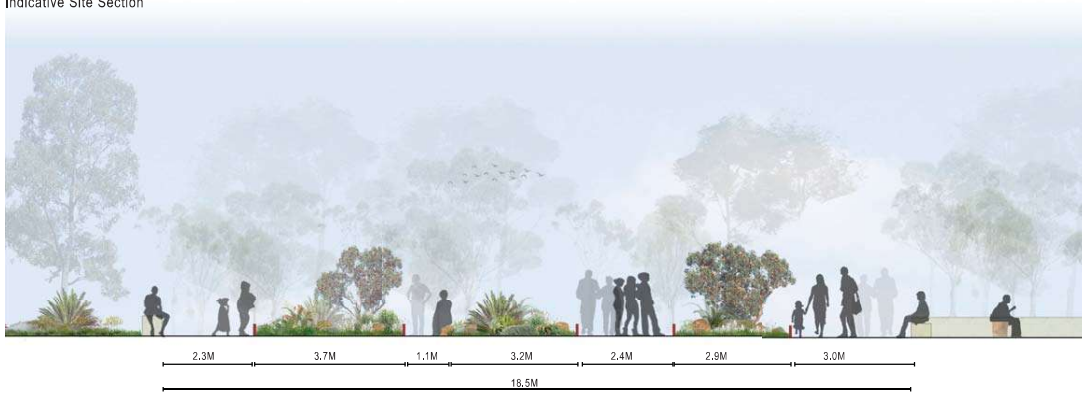
Precedent Image: Re-use of logs within the building and car park area to provide habitat for local fauna.



Precedent Image: The use of rocks and gravels to reduce erosion from roof storm water and provide habitat for local fauna.

## 2.9 BUSH TUCKER GARDEN

Indicative Site Section



Site Plan - section location  
NTS



Precedent Image: Garden beds with compacted fines pathways to provide access. Planting to be irrigated to provide



Precedent Image: Selection of planting (to be irrigated) that provides medicinal and edible food or uses.



Precedent Image: Steel edges to garden beds provide easy access and help define pathways.

# 3.0 MATERIAL PALETTE



### 3.1 MATERIAL PALETTE

A cohesive palette of materials has been selected to:

- visually connect the building and landscape to read as one cohesive design.
- consider ongoing maintenance, life-cycle, fire resistance, and vandal resistance.



EXPOSED AGGREGATE CONCRETE (PV01)



CONCRETE - LIMESTONE TONED (PV02)



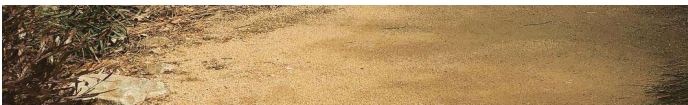
RAMMED EARTH WALL (WT01)



LIMESTONE ROCKS AND GRAVELS



TIMBER SEATING



COMPACTED LIMESTONE PATHWAYS (PV03)

### 3.2 SURFACES PLAN



**LEGEND**

**PV01 EXPOSED AGGREGATE CONCRETE**



Supplier : HOLCIM  
 Product : Spinifex  
 Description: Exposed Aggregate / Honed Surface

**PV02 CONCRETE PATH**



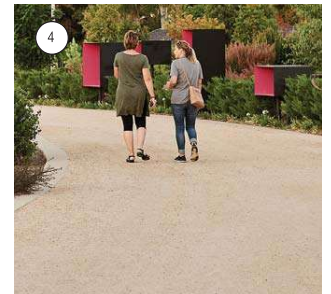
Supplier : TBC  
 Product : Concrete Path  
 Description: Broom swept frameless concrete path. CCS Canvas colour.

**PV03 COMPACTED LIMESTONE PATH**



Supplier : TBC  
 Product : Compacted, cement stabilised crushed limestone path.

**PV04 COMPACTED LIMESTONE PATH**



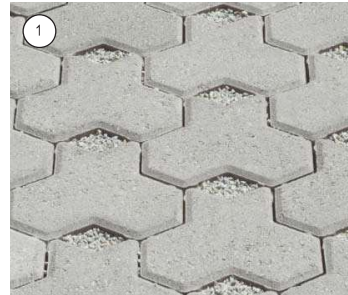
Supplier : Creation Landscape Supplies  
 Product : Compacted summerstone fines

### 3.3 SURFACES PLAN



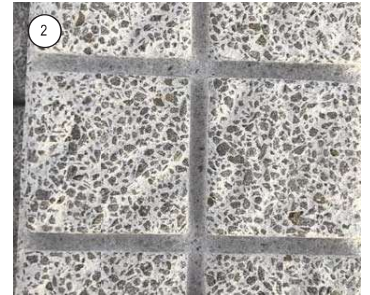
#### LEGEND

##### PV05 CARPARK PERMEABLE PAVER



SUPPLIER : Boral  
 PRODUCT : Aqua tri-Pave  
 DESCRIPTION: Concrete permeable paver.  
 SIZE: 171 x 198 x 80mm

##### PV06 RUMBLE STRIPS



SUPPLIER : Austral Bricks  
 PRODUCT : Cobbletops  
 DESCRIPTION: Concrete unit paver.

### 3.4 CUSTOM FURNITURE SEATING



#### LEGEND

CS01 - CUSTOM SEAT 01



SUPPLIER : Custom

DESCRIPTION: Recycled hardwood timber carved into seats. Installed with a steel stirrup into a concrete footing to keep off ground.

Size: 400-600 mm H x 500- 1500 mm W

CS02 - CUSTOM SEAT 02

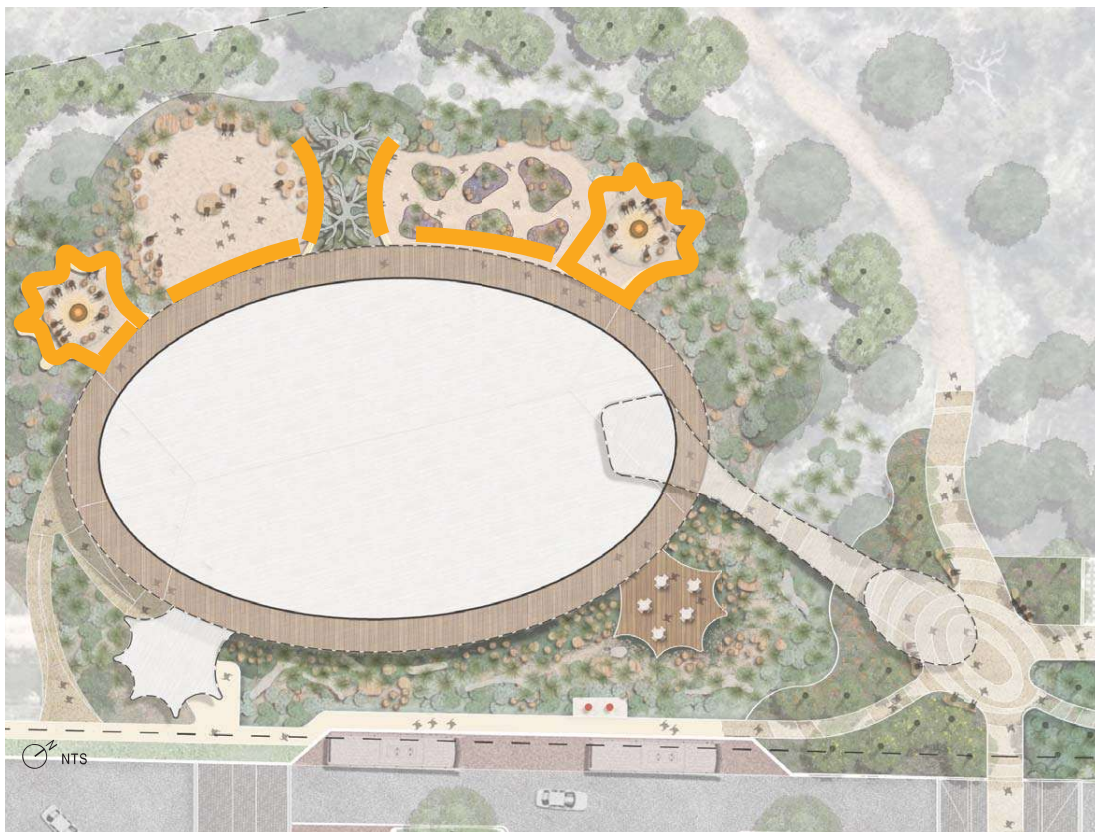


SUPPLIER : Custom

DESCRIPTION: Recycled hardwood timber log carved into seats. Installed with a steel stirrup into a concrete footing to keep off ground.

Size: 400-600 mm H x 500- 1500 mm W

### 3.5 WALLING & EDGING



#### LEGEND

WT01 - WALL TYPE 01



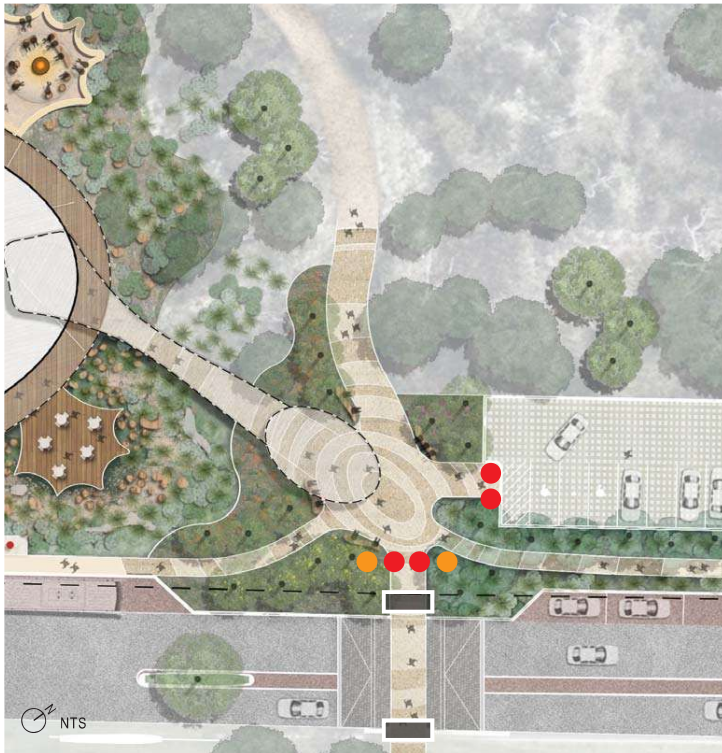
SUPPLIER : Custom

DESCRIPTION: Cement stabilised, rammed earth walling. Use of site soil to create walls if cut and fill requirements provide excess fill.

Size: 400-600 mm H x 500 W x various L



### 3.6 FIXTURES



#### LEGEND

##### FX01 BOLLARD FIXED



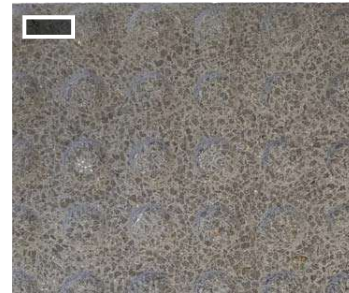
SUPPLIER : Wheel Stops Perth  
 PRODUCT : Fixed Bollard  
 DESCRIPTION: Stainless Steel 600 mm H x 150 mm W

##### FX02 BOLLARD REMOVABLE



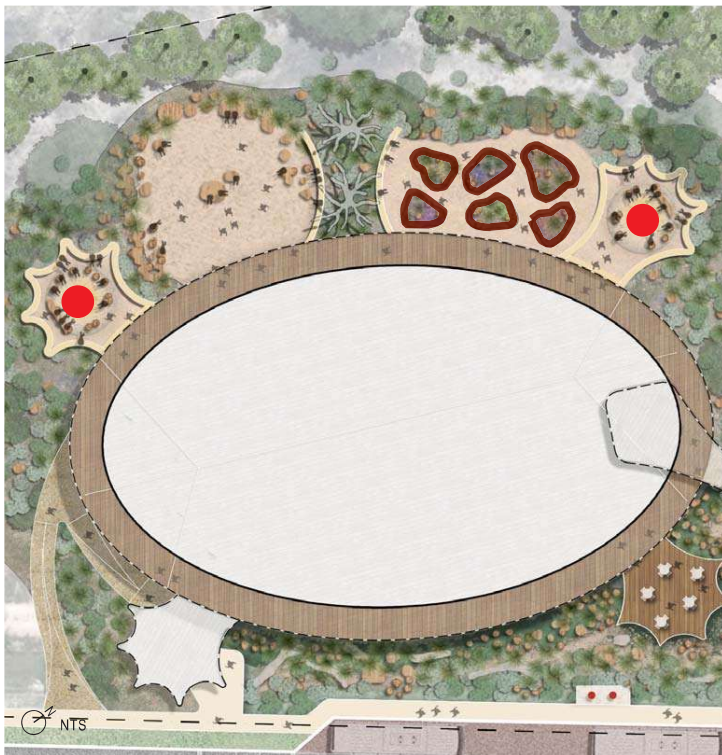
SUPPLIER : Wheel Stops Perth  
 PRODUCT : Removable Bollard  
 DESCRIPTION: Stainless Steel 600 mm H x 150 mm W

##### FX03 WARNING TACTILES



SUPPLIER : Guardian Tactiles Perth  
 PRODUCT : Integrated Concrete Warning Tactile  
 DESCRIPTION: Charcoal coloured Concrete 300 x 300 x 40mm

### 3.7 FIXTURES



#### LEGEND

##### FX04 FIREPIT



SUPPLIER/PRODUCT : Custom Firepit  
 DESCRIPTION: Steel Ring Firepit. Timber Cover.  
 Size : 300H x 1200W x 6mmT

##### FX05 Corten Steel Edge



Supplier : Formboss  
 Product : Corten Steel Edging  
 Description:300mm High Corten Steel Edging

## 4.0 PLANTING



## 4.1 PLANTING PRINCIPLES

A cohesive palette of planting has been selected to:

- visually connect the building, bushland, and landscape to read as one cohesive design.
- consider ongoing maintenance and to meet BAL requirements.
- consider fire resistance within the APZ with the use of irrigated fire resistant planting.



FEATURE PLANTING - USE OF TRANSPLANTED DJIRIDJI AND BALGA



DIVERSITY AND SEASONAL INTEREST

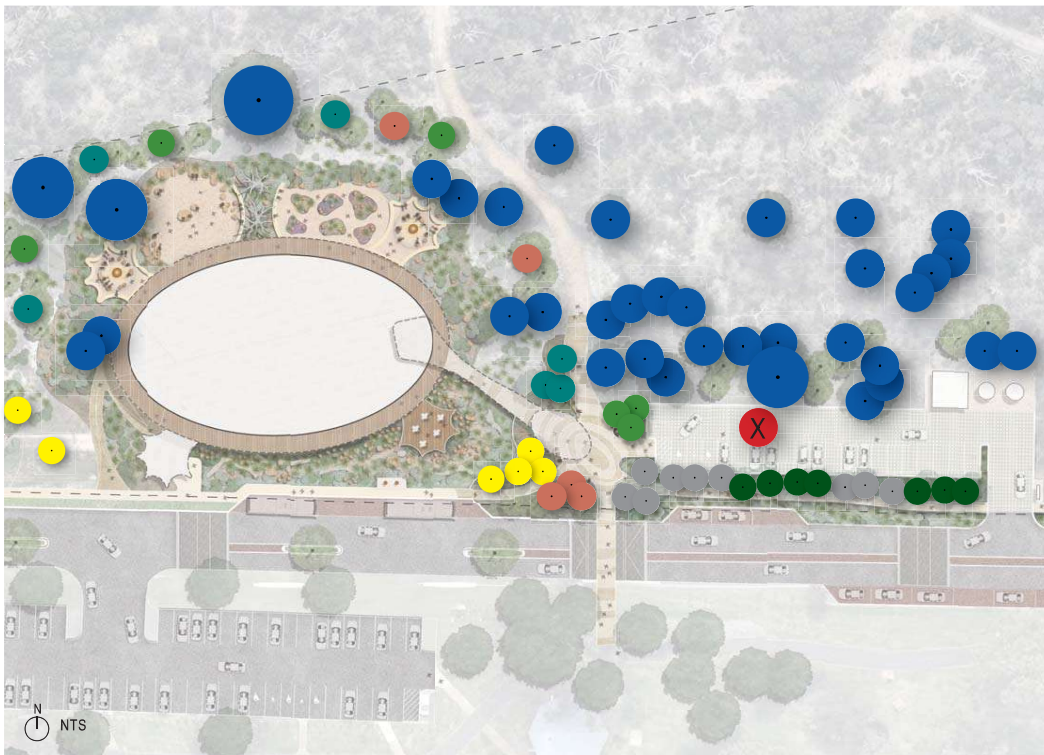


FIRE RESISTANT PLANTING - IRRIGATED, LOW GROWING PLANTING WITHIN APZ



BUSH TUCKER - EDIBLE AND MEDICINAL PLANTS

## 4.2 TREE REMOVAL, RETENTION AND PLANTING



- Marri
- Jarrah
- Melaleuca sp.
- Existing Tree to be Retained
- Tuart
- Banksia
- Eucalyptus rudis
- ✗ Existing Tree to be REMOVED

Note: All planting locations and species are indicative only and will be confirmed during documentation stage. All garden beds and re-vegetation areas to be finished with 100mm of coarse organic mulch.



Jarrah  
Eucalyptus marginata  
Mature Size: 15-20m x 8-10m  
Flowers: Yellow,  
Nov-Dec, Jan-April



Melaleuca raphiophylla  
Moonah  
Mature size: 6m x 4m  
Type: Tree  
Flowers: Yellow/Cream/  
White, Nov-Dec, Jan-Feb



Eucalyptus gomphocephala  
Tuart  
Mature size: 10-20m x 8-10m  
Type: Tree  
Flowers: Yellow/Cream/  
White, Nov-Dec, Jan-Feb



Corymbia calophylla  
Marri  
Mature Size: 15-20m x 8-10m  
Flowers: Yellow,  
Nov-Dec, Jan-April



Eucalyptus rudis  
Flooded Gum  
Mature size: 6-10m x 4-10m  
Type: Tree  
Flowers: Yellow/Cream/  
White, Nov-Feb



Banksia attenuata  
'Banksia'  
Mature size: 6m x 4m  
Type: Tree  
Flowers: Yellow Nov-Feb

Proposed trees installed as a 5L pot size. Some trees to be grown from seed collected on site depending on viability.

### 4.3 MATURE PLANT TRANSPLANTS



#### LEGEND



Macrozamia riedlei  
Zamia Palm  
Install Mature size: 0.5-1.5m x 1.5m  
Type: Feature Plant  
Flowers: Red, Sept-Dec  
Install Pot Size: T/Stock



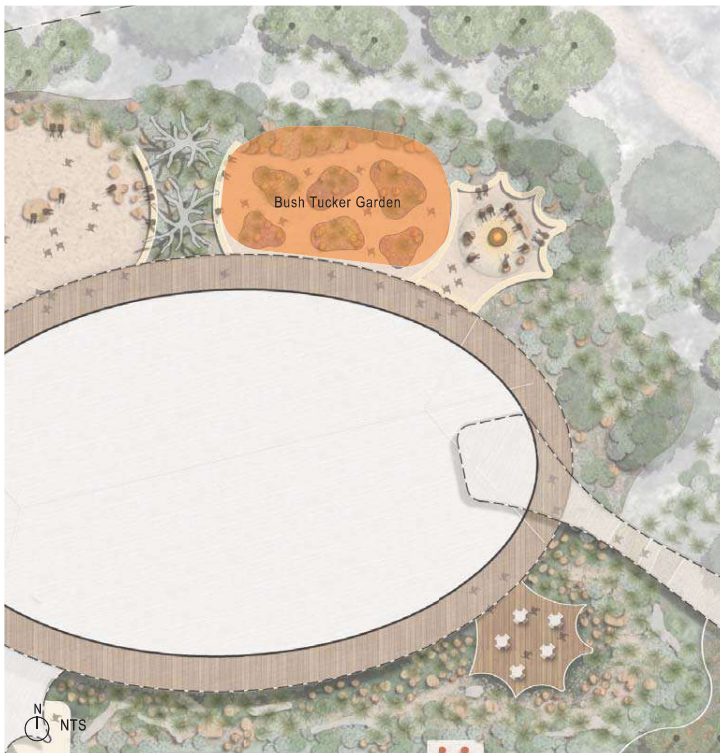
Xanthorrhoea preissii  
Balga / Grass tree  
Install Size: 1-3m x 1m  
Type: Feature Plant  
Flowers: Cream  
Install Pot Size: Mature Specimen



Mature Transplants Feature Plants - Currently approx. 70 x Djiridji (Macrozamia) and 10 x Balga (Xanthorrhoea) have been transplanted and stored from the site for re-use in the project.

Note: All planting locations and species are indicative only and will be confirmed during documentation stage. All garden beds and re-vegetation areas to be finished with 100mm of coarse organic mulch.

## 4.4 BUSH TUCKER + MEDICINAL & CULTURAL PLANTS



*Santalum*  
Quandong  
Mature size: 2.5m x 2m  
Type: Edible  
Flowers: Red, Sept-Dec  
Install Pot Size: T/Stock



*Atriplex* sp.  
Saltbush  
Mature size: 0.5m x 1m  
Type: Groundcover Flowers: Red, Sept-Dec  
Install Pot Size: T/Stock



*Haemodorum spicatum*  
Bloodroot / Born  
Mature size: 1.5m x 0.5m  
Type: Edible  
Install Pot Size: T/Stock



*Carpobrotus virescens*  
Pigface / Bain  
Mature size: 0.3m x 1m  
Type: Groundcover  
Flowers: Pink, year round  
Install Pot Size: T/Stock



*Macrozamia riedlei*  
Zamia Palm  
Install Mature size: 0.5-1.5m x 1.5m  
Type: Feature Plant  
Flowers: Red, Sept-Dec  
Install Pot Size: Transplant



*Melaleuca radula*  
Graceful Honey Myrtle / Moorngan  
Mature size: 0.5m-2m  
Type: Small shrub  
Flowers: Pink, spring  
Install Pot Size: T/Stock



*Dianella revoluta*  
Flax Lilly  
Mature Size: 1m x 1.5m  
Type: Strappy  
Flowers: Brown, Nov-May  
Install Pot Size: T/Stock



*Enchylaena tomentosa*  
Ruby Saltbush  
Mature size: 0.5m x 1m  
Type: Groundcover  
Flowers: Red, Sept-Dec  
Install Pot Size: T/Stock

Source: 'Noongar Bush Medicine' Vivienne Hansen & John Horsfall.

Note: All planting locations and species are indicative only and will be confirmed during documentation stage. All garden beds and re-vegetation areas to be finished with 100mm of coarse organic mulch.

## 4.5 PLANT SCHEDULE

### Master Tree Schedule

Code	Botanical Name	Common Name	Pot Size
<b>Afr</b>	<i>Allocasuarina fraseriana</i>	Sheoak	5L
<b>Bat</b>	<i>Banksia attenuata</i>	Candle Banksia	5L
<b>Bgr</b>	<i>Banksia grandis</i>	Bull Banksia	5L
<b>Bil</b>	<i>Banksia illicifolia</i>	Holly Leaved Banksia	5L
<b>Bll</b>	<i>Banksia littoralis</i>	Swamp Banksia	5L
<b>Bme</b>	<i>Banksia menziesii</i>	Firewood Banksia	5L
<b>Bse</b>	<i>Banksia sessilis</i>	Parrot Bush	5L
<b>Cca</b>	<i>Corymbia calophylla</i>	Marri	5L
<b>Ego</b>	<i>Eucalyptus gomphocephala</i>	Tuart	5L
<b>Ern</b>	<i>Eucalyptus marginata</i>	Jarraah	5L
<b>Epr</b>	<i>Eucalyptus rudis</i>	Flooded Gum	5L
<b>Mpr</b>	<i>Meiroleuca preissiana</i>	Moonah	5L
<b>Mre</b>	<i>Macrozamia reidii</i>	Zamia Palm	Transplant
<b>Mrh</b>	<i>Melaleuca rhaphiophylla</i>	Swamp Paperbark	5L
<b>Xpr</b>	<i>Xanthorea sp.</i>	Balgaa	Transplant

### Groundcovers + Climbers

Code	Botanical Name	Common Name	Pot Size
<b>Bfu</b>	<i>Billardiera fusiformis</i>	Australian Bluebell	Tube
<b>Cvl</b>	<i>Carpobrotus virescens</i>	Coastal Pigface	Tube
<b>Hco</b>	<i>Hardenbergia comptoniana</i>	Native Wisteria	Tube
<b>Hpu</b>	<i>Hemiantha pungens</i>	Snakebush	Tube
<b>Kco</b>	<i>Kennedia coccinea</i>	Coral Vine	Tube
<b>Kpo</b>	<i>Kennedia prostrata</i>	Running Postman	Tube
<b>Scs</b>	<i>Scaevola calyptera</i>	Royal Robe	Tube

### Small Shrubs

Code	Botanical Name	Common Name	Pot Size
<b>Apu</b>	<i>Acacia pulchella</i>	Prickly Moses	Tube
<b>Ama</b>	<i>Anigozanthos mangleyi</i>	Mangles Kangaroo Paw	Tube
<b>Avi</b>	<i>Anigozanthos viridis</i>	Green Kangaroo Paw	Tube
<b>Bda</b>	<i>Banksia dallanneyi</i>	Couch Honeypot	Tube
<b>Ber</b>	<i>Bossiaea eriocarpa</i>	Common Brown Pea	Tube
<b>Cac</b>	<i>Conostylis aculeata</i>	Prickly Conostylis	Tube
<b>Dre</b>	<i>Dianella revoluta</i>	Blueberry Lily	Tube
<b>Eql</b>	<i>Eremophila glabra</i>	Tar Bush	Tube
<b>Gca</b>	<i>Gastrolobium capitatum</i>	Bacon and Eggs	Tube
<b>Gto</b>	<i>Gompholobium tomentosum</i>	Hairy Yellow Pea	Tube
<b>Gpl</b>	<i>Grevillea pilulifera</i>	Woolly-flowered Grevillea	Tube
<b>Gwi</b>	<i>Grevillea wilsonii</i>	Wilson's Grevillea	Tube
<b>Hla</b>	<i>Haemodorum laxum</i>	Bloodroot	Tube
<b>Hhy</b>	<i>Hibbertia hypericoides</i>	Yellow Buttercup	Tube
<b>Htr</b>	<i>Hovea trisperma</i>	Common Hovea	Tube
<b>Lsq</b>	<i>Laxmannia squarrosa</i>	Paper Lily	Tube
<b>Lbi</b>	<i>Lechenaultia biloba</i>	Blue Leschenaultia	Tube
<b>Poc</b>	<i>Patersonia occidentalis</i>	Purple Flag	Tube
<b>Pca</b>	<i>Phyllanthus calycinus</i>	False Boronia	Tube
<b>Spf</b>	<i>Scaevola pilosa</i>	Hairy Fanflower	Tube
<b>Tmu</b>	<i>Thysanotus multiflorus</i>	Many Flowered Fringed Lily	Tube

### Medium Shrubs

Code	Botanical Name	Common Name	Pot Size
<b>Ase</b>	<i>Acacia sessilis</i>	Acacia	Tube
<b>Cqu</b>	<i>Calotharmus quadrifidus</i>	One-sided Bottlebrush	Tube
<b>Csa</b>	<i>Calothermus sanguineus</i>	Silky-leaved Blood flower	Tube
<b>Hll</b>	<i>Hakea lissocarpa</i>	Honey Bush	Tube
<b>Hpr</b>	<i>Hakea prostrata</i>	Harsh Hakea	Tube
<b>Hru</b>	<i>Hakea ruscifolia</i>	Candle Hakea	Tube
<b>Han</b>	<i>Hypocalymma angustifolium</i>	White Myrtle	Tube
<b>Kre</b>	<i>Kunzea recurva</i>	Purple Kunzea	Tube
<b>Pal</b>	<i>Pericalymma ellipticum</i>	Swamp Teatree	Tube
<b>Sin</b>	<i>Scholtzia involucreta</i>	Spiked Scholtzia	Tube
<b>Vde</b>	<i>Verticordia densiflora</i>	Compacted Featherflower	Tube

### Sedges + Rushes

Code	Botanical Name	Common Name	Pot Size
<b>Bar</b>	<i>Baumea articulata</i>	Jointed Twig-Rush	Tube
<b>Bju</b>	<i>Baumea juncea</i>	Bare Twig-rush	Tube
<b>Cac</b>	<i>Conostylis aculeata</i>	Prickly Conostylis	Tube
<b>Cca</b>	<i>Conostylis candidaris</i>	Grey Cottonheads	Tube
<b>Dre</b>	<i>Dianella revoluta</i>	Blueberry Lily	Tube
<b>Fro</b>	<i>Ficinia nodosa</i>	Knobby Club Rush	Tube
<b>Hpa</b>	<i>Haemodorum paniculatum</i>	Bloodroot	Tube
<b>Hsp</b>	<i>Haemodorum spicatum</i>	Bloodroot	Tube
<b>Poc</b>	<i>Patersonia occidentalis</i>	Purple Flag	Tube
<b>Tmu</b>	<i>Thysanotus multiflorus</i>	Many Flowered Fringed Lily	Tube

Note: All planting locations and species are indicative only and will be confirmed during documentation stage. All garden beds and re-vegetation areas to be finished with 100mm of coarse organic mulch and 50mm thick top soil. Those garden beds within the APZ will be irrigated.



